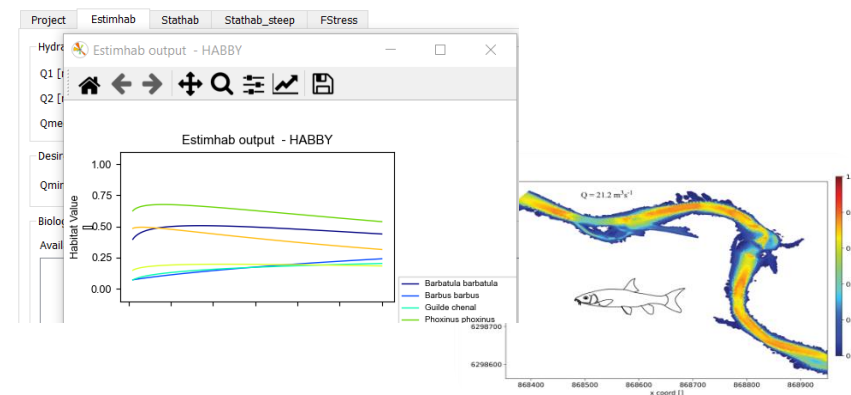


Interdisciplinary Research unit in **Lyon, FR**

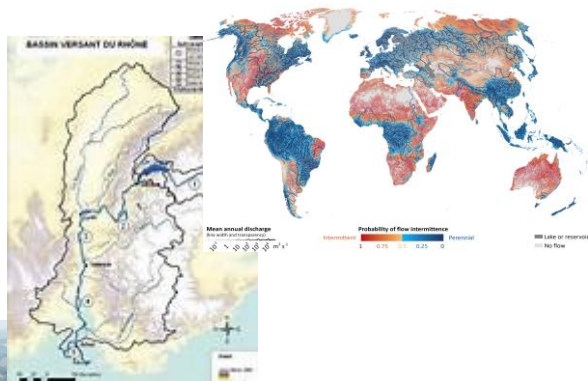
Staff ~140 (70 permanent)

Hydrology, hydraulics, environmental chemistry,
ecotoxicology, microbiology, ecology

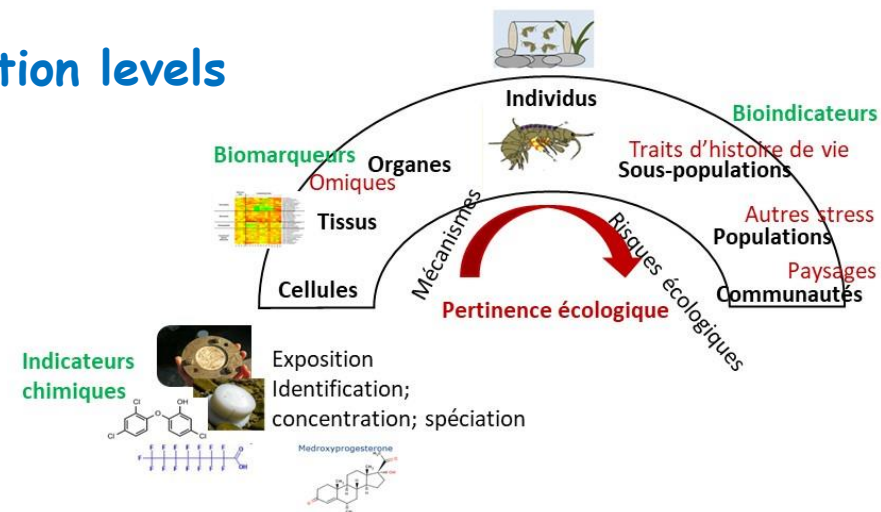
A key place ...
...on the wine map !



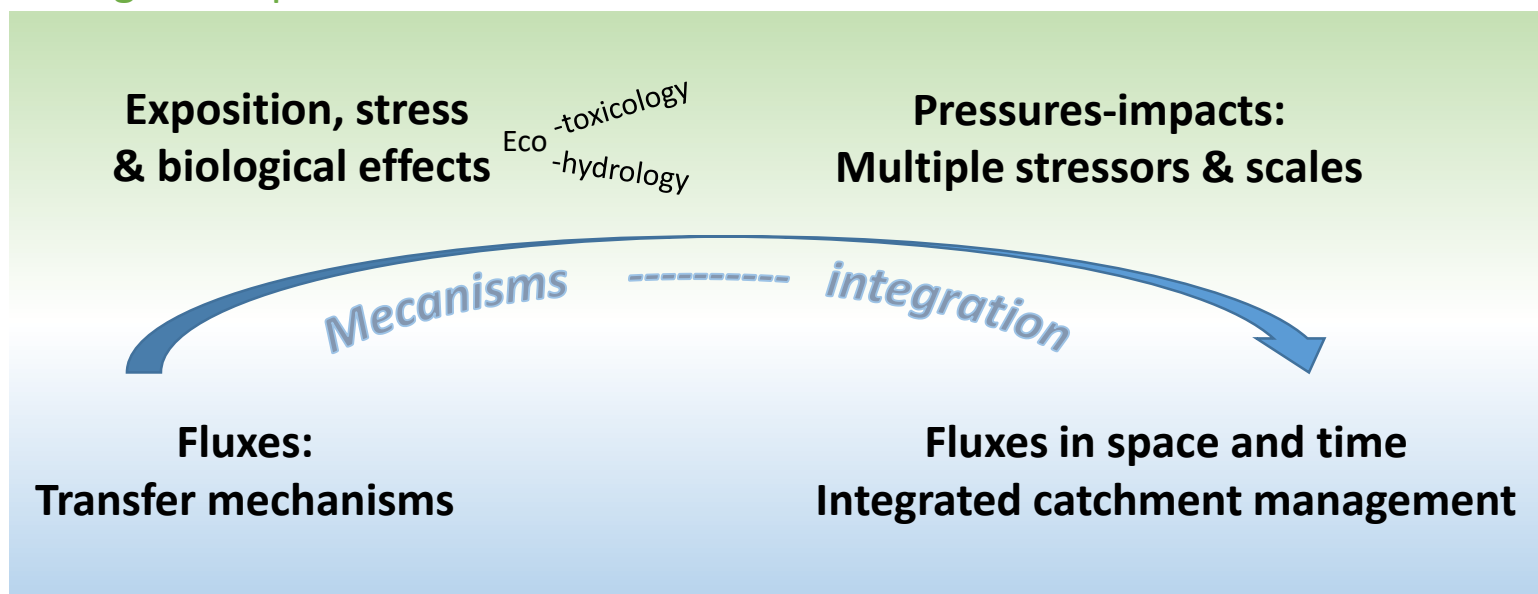
Scales



Organization levels



Biological responses



Physico-chemical fluxes

Balancing disciplinary and interdisciplinary research

Hydro-ecological projections at 100 years, Rhône catchment, scenario RCP 8.5

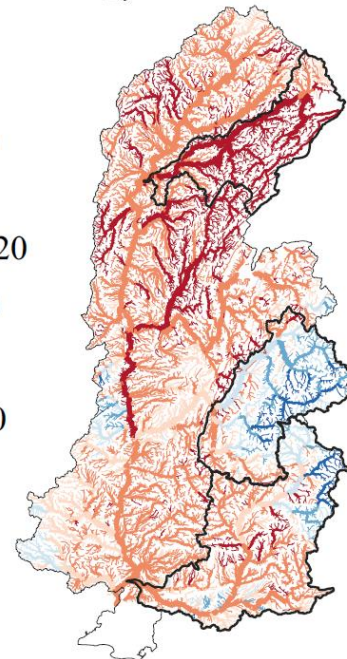
Low flows

Suitable habitats

(c)

$\Delta Q95$ (%)

- > -50
- 50 - -20
- 20 - 0
- 0 - 20
- 20 - 50
- > 50

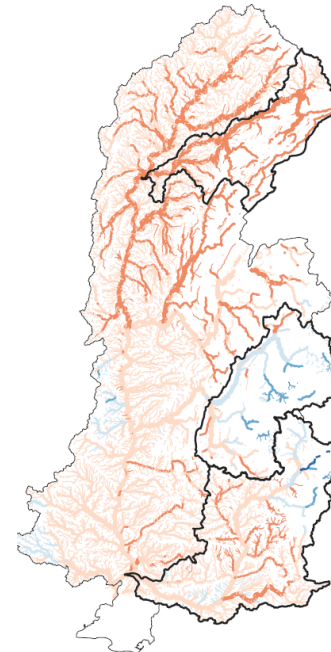


Morel et al., 2023

Discharge percentile Q95
Distributed hydrologic model

ΔWUA (%)

- > -50
- 50 - -20
- 20 - 0
- 0 - 20
- 20 - 50
- > 50



Suitable habitats for barbel
Linking hydrology-hydraulics-habitats

Disciplinary research
e.g. instationarity of
Hydrological processes

Interdisciplinary research
e.g. models coupling

RiverLy Observing & testing Infrastructures field & lab



ARDIERES Impacts agricoles, eau-santé



AIN Connectivités



SIPIBEL Flux médicaments



OTHU (FR) Hydrologie
Urbaine



VALLEE RHONE (OHM)

Restauration et flux



LACS ALPINS (SOERE) Trajectoires



ARC ISERE Hydraulique et flux



TRESSSES Dynamiques géomorphologiques

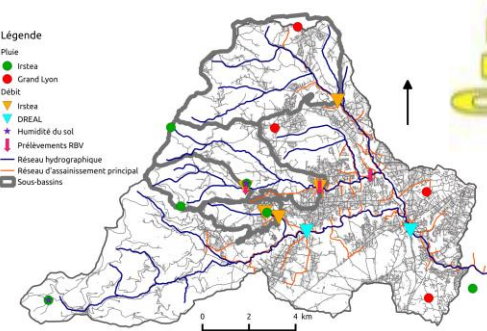


RIVIERES CEVENOLES

Hydrologies extrêmes



Légende
 Pluie
 ● Irstea
 ● Grand Lyon
 Débit
 ▼ Irstea
 DREAL
 ● Humidité du sol
 ■ Prélèvements RBV
 — Réseau hydrographique
 — Réseau d'assainissement principal
 ■ Sous-bassins



OTHU: Bassin périurbain de l'Yzeron